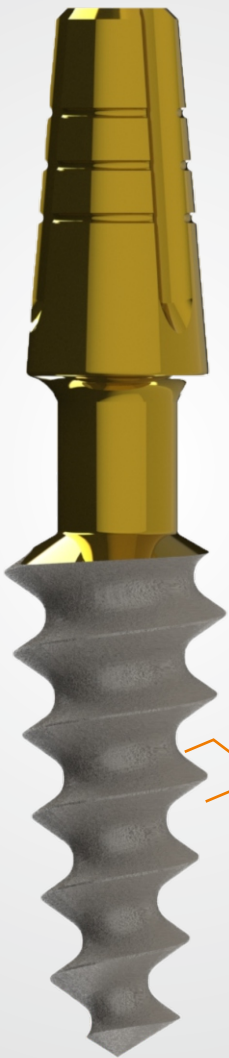


# i-FIX<sup>®</sup>

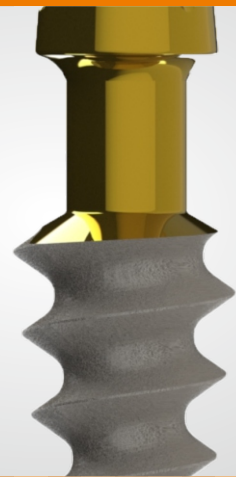
## SURFACE

Sand Blasted (large grit) with acid etching which results in surface roughness and excellent bone integration



## FEATURES

1. Excellent Primary Stability
2. Condense Soft Cancellous Bone
3. Minimum Osteotomy Required
4. Excellent For Narrow Ridges
5. May Avoid Bone Augmentation
6. Immediate Loading



→ **COMPRESSIVE IMPLANT**

EN ISO 13485 Certified Company

**Kamal Encon Industries Ltd.**

Plot No. 917, Sector 68, IMT – Faridabad, Haryana - 121001, India

+91-129-4198707 | +91-7065950917 | info@kamalmedtech.com | www.kamamedtech.com

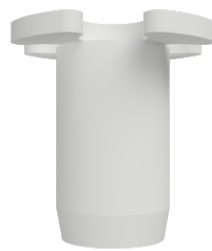
# INDICATIONS

- ✓ Immediate Prosthetic Loading
- ✓ Elimination of screw loosening
- ✓ Reduces cost & time

	A	B	C	D	E	F	G	H	I	J
3510	0.65	10	10	2	1.8	0.9	3.5	2.56	1.55	0.5
3512	0.65	12	8	2	1.8	0.8	3.5	2.46	1.55	0.5
3514	0.65	14	7	2	1.8	0.8	3.5	2.46	1.55	0.5
3516	0.65	16	6	2	1.8	0.8	3.5	2.46	1.55	0.5
4008	0.7	8	13.5	2	2.2	1.2	4	2.95	1.55	0.5
4010	0.7	10	13	2	0.8	0.8	4	2.95	1.55	0.5
4012	0.7	12	11	2	1.8	0.8	4	2.95	1.55	0.5
4014	0.7	14	9	2	1.8	0.8	4	2.95	1.55	0.5
4016	0.7	16	8	2	1.8	0.8	4	2.95	1.55	0.5
4508	0.75	8	12.5	2.3	2.8	1.4	4.5	3.05	1.55	0.7
4510	0.75	10	13	2.3	2.3	0.9	4.5	3.05	1.55	0.7
4512	0.75	12	10.5	2.3	2.3	0.9	4.5	3.05	1.55	0.7
4514	0.75	14	9	2.3	2.3	0.9	4.5	3.05	1.55	0.7
5008	0.85	8	14	2.3	3.2	1.8	5	3.55	1.55	0.7
5010	0.85	10	14.5	2.3	2.6	1.2	5	3.55	1.55	0.7
5012	0.85	12	12	2.3	2.6	1.2	5	3.55	1.55	0.7
5014	0.85	14	11	2.3	2.3	0.9	5	3.55	1.55	0.7
5508	0.95	8	18	2.5	3.2	1.8	5.5	4.04	1.55	0.7
5510	0.95	10	18	2.5	2.5	1.1	5.5	4.04	1.55	0.7
5512	0.95	12	15	2.5	2.5	1.1	5.5	4.04	1.55	0.7

- A** - Tip Length
- B** - Thread Length
- C** - Total Angle
- D** - Shaft Diameter
- E** - Apical Diameter
- F** - Apical Core Diameter
- G** - Implant Crestal Diameter
- H** - Implant Crestal Core Diameter
- I** - Pitch
- J** - Thread Depth

## PROSTHETIC OPTIONS



Impression Coping



I-Fix C1 Analog



BurnOut Cap

## PRODUCT CODE

Brand Name: i-Fix C1							
	Length (in mm)						
Diameter (mm)	8	10	12	14	16	18	20
3.5	IC350800	IC350100	IC350120	IC350140	IC350160	IC350180	IC350200
4	IC400800	IC400100	IC400120	IC400140	IC400160	IC400180	IC400200
4.5	IC450800	IC450100	IC450120	IC450140	IC450160	X	X
5	IC500800	IC500100	IC500120	IC500120	X	X	X
5.5	IC550800	IC550100	IC550120	IC550140	X	X	X