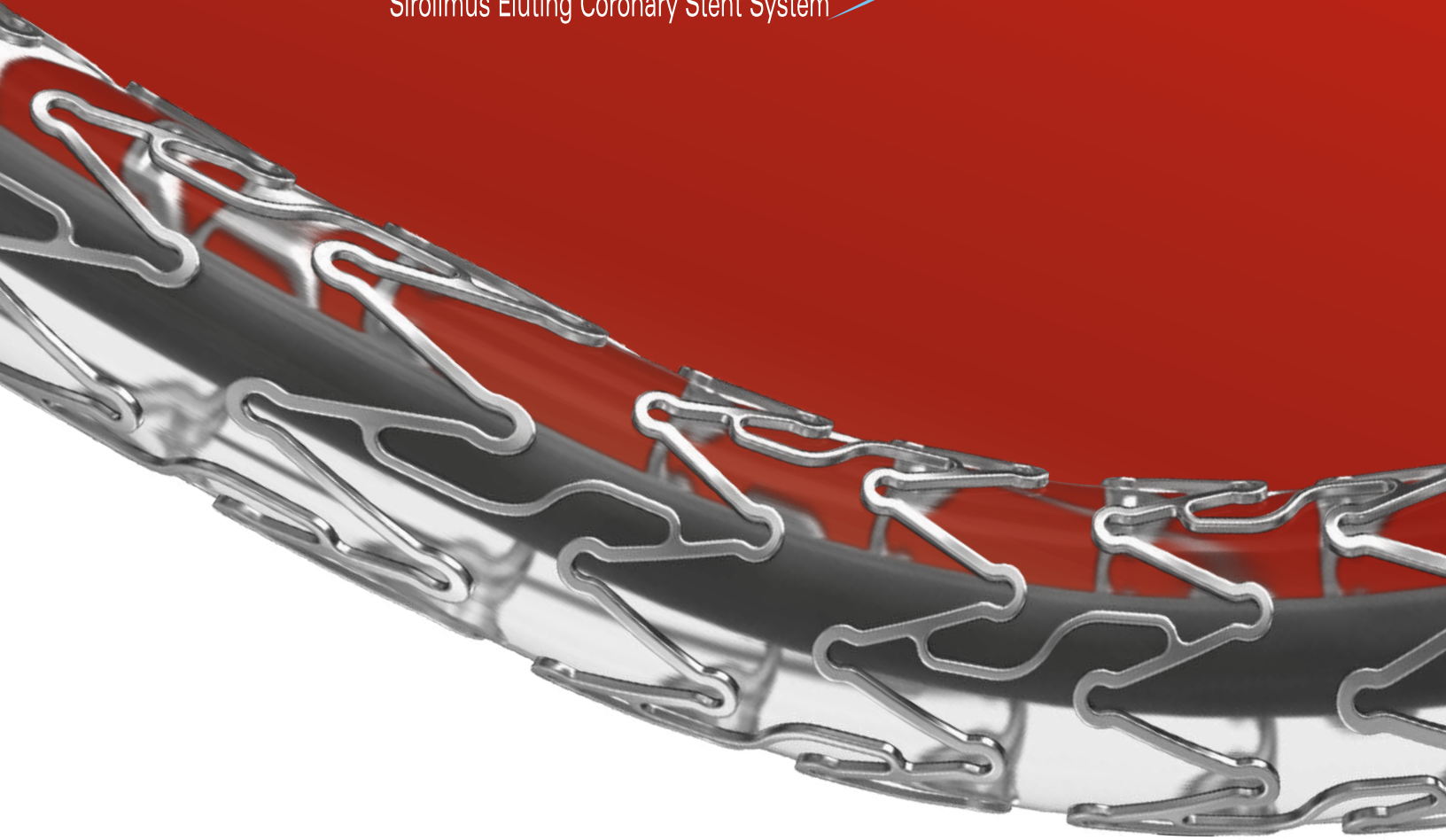


CE₁₄₃₄

TRACK Flex[®]

Sirolimus Eluting Coronary Stent System



THE STENT WITH
EXCEPTIONAL FLEXIBILITY &
ULTRA-THIN STRUT THICKNESS (60-65 μ m)

World class facility for **Cardiac stents**

Kamal has commissioned 50,000 Sq. ft state of the art manufacturing facility at IMT Faridabad, Haryana. The facility has been built as per International Standard EN ISO 13485.

Kamal's dedicated 400+ workforce, through Amalgamation of Innovation and Technology, has enabled introduction of world class quality Products and Devices which have found ready acceptance and sustained support across a broad spectrum of users worldwide. Our Healthcare vertical is committed to your success with Best in Class Medical Devices and Services.

"A Better Tomorrow for All"





Unique stent design together with proven efficacy of Sirolimus drug & Biodegradable polymers resulted into Trackflex with excellent safety & efficacy profile

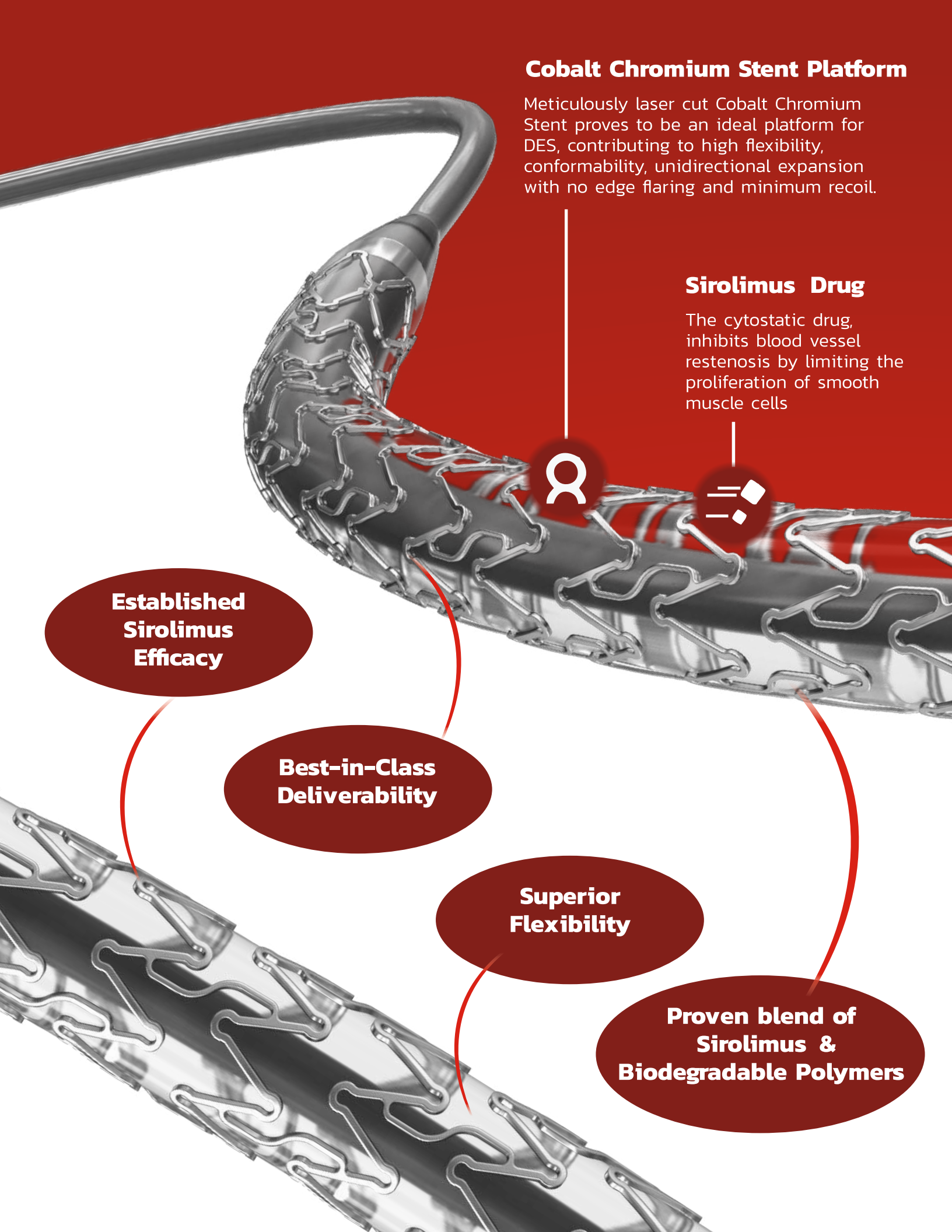
Sirolimus Drug being more lipophilic than other limus family drug, penetrates rapidly at the target lesion and provides rapid cell inhibitory action. Sirolimus stents are well proven to show less restenosis, stent thrombosis and perprocedural myocardial infraction compared to earlier generation of Drug Eluting Stents.

Cobalt Chromium Stent Platform

Meticulously laser cut Cobalt Chromium Stent proves to be an ideal platform for DES, contributing to high flexibility, conformability, unidirectional expansion with no edge flaring and minimum recoil.

Sirolimus Drug

The cytostatic drug, inhibits blood vessel restenosis by limiting the proliferation of smooth muscle cells



**Established
Sirolimus
Efficacy**

**Best-in-Class
Deliverability**

**Superior
Flexibility**

**Proven blend of
Sirolimus &
Biodegradable Polymers**

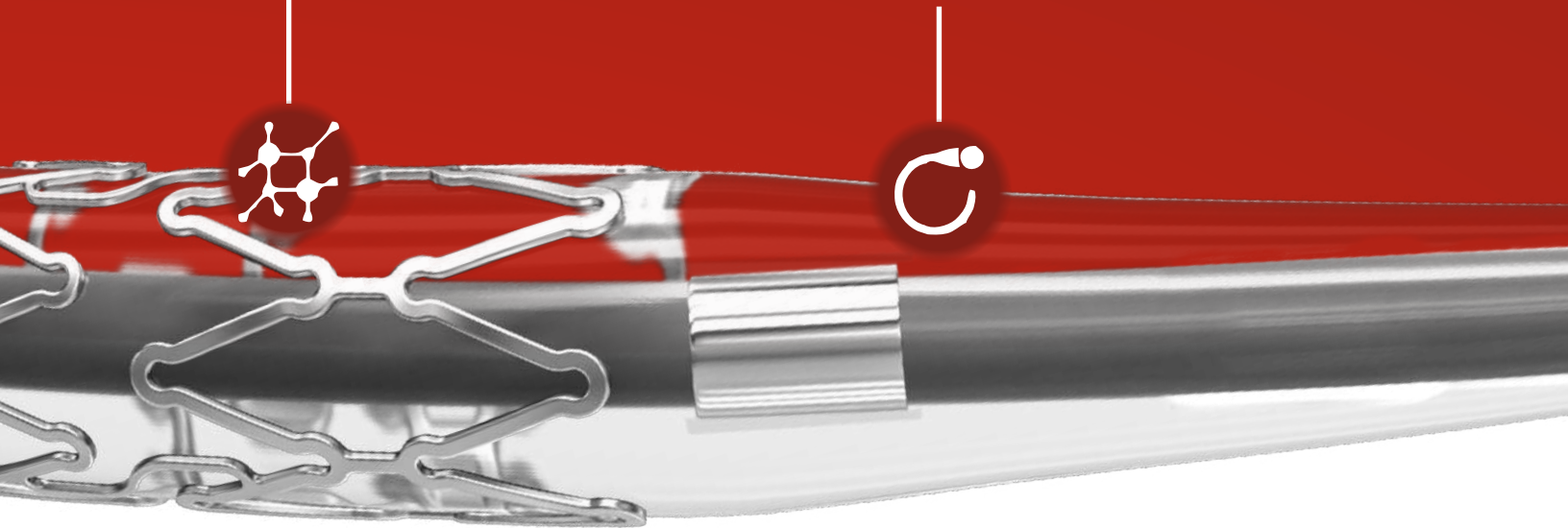
Polymers

Biodegradable polymers blend, act as a binding factor for the drug. The unique and validated formulation help drug release in a controlled fashion.

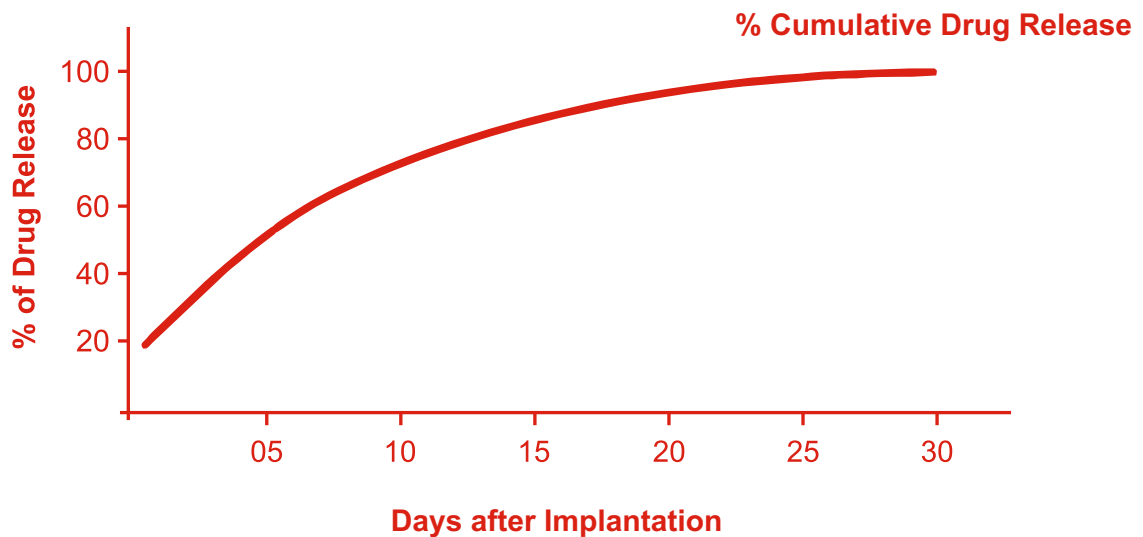
TRACKflex[®]
Sirolimus Eluting Coronary Stent System

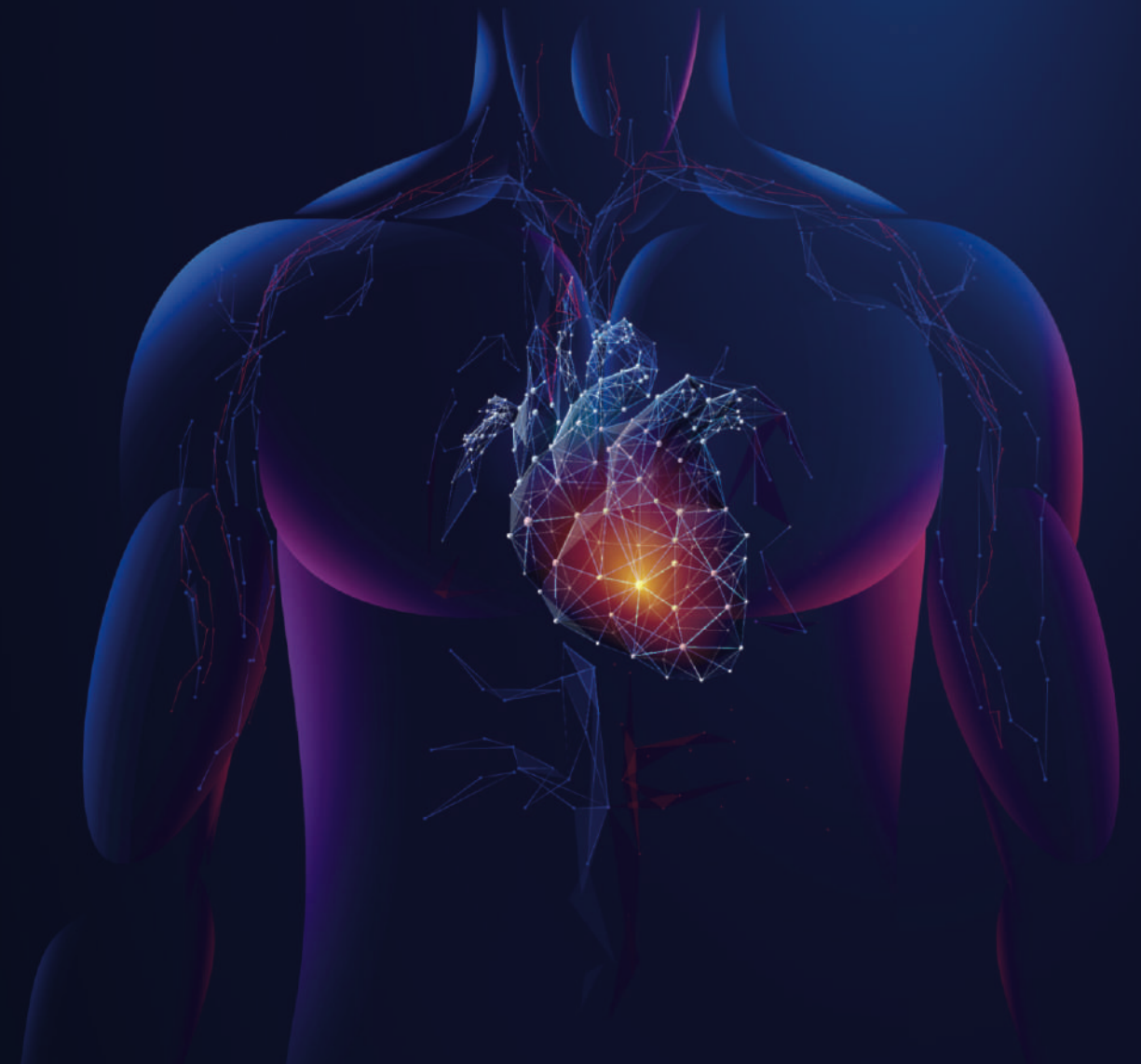
PTCA Balloon Catheter

Drug coated stent is mounted on the balloon portion of PTCA balloon Catheter, the latter assists in stent positioning & dilatation. The Ultra-low profile, excellent crossability and flexible tip of PTCA balloon Catheter help entire stent system to achieve its expected clinical outcomes.



Drug Release Profile:





TRACKflex®

Sirolimus Eluting Coronary Stent System

Trackflex has proven drug release kinetics. Initial burst of Sirolimus followed by sustained release up to 30 Days. Biodegradable polymers completely degrades by hydrolysis & enzymatic degradation which is eventually excreted from body in form of CO₂ and H₂O.





Low Recoil avoids the risks of Malposition and restenosis



Ultra-Thin Strut thickness (60-65 μ m), reduces the risk of stent thrombosis and improves the rate of stent strut coverage.



Biodegradable polymers offer improved vessel healing, long term safety in terms of death, stent thrombosis, and myocardial infarction.



Negligible stent foreshortening, make TRACKFLEX an ideal one for ostial and bifurcation lesions.



Higher tensile strength attributes to kink resistance and flexible performance of delivery catheter



TRACKFLEX being extremely flexible is the choice of use for torturous and complex anatomy.



Uniform stent design throughout the entire stent length attributes to unidirectional stent expansion reducing the chances of vessel injury.



Different stent models for different stent diameters avoid overstretching of the stent in larger diameters and provide optimum stent performance.



Wavy strut pattern contributes to larger angle during expansion eventually leading to better stent flexibility.



Optimum connectors placement leading to superior stent conformance.



Ultra-low tip profile gives resistance free trackability and pushability characteristics.



Platinum- iridium radio opaque markers are precisely placed within the balloon cones for accurate stent positioning and placement.



TRACKflex[®]
Sirolimus Eluting Coronary Stent System

HAPPINESS STARTS WITH HEALTH

STENT SPECIFICATION

Design:	Open Cell Stent Design
Material:	Cobalt Chromium (CoCr) L605
Length (mm):	8, 13, 16, 20, 24, 28, 32, 36, 40, 43 & 47
Diameter (mm):	2.00, 2.25, 2.50, 2.75, 3.00, 3.50, 4.00 & 4.50
Strut Dimensions:	Thickness 60-65 µm Strut 70 µm Connectors 50 µm
Nominal Pressure (NP):	9 atm
Rated Burst Pressure (RBP):	16 atm
Foreshortening:	Nearly Zero
Recoil:	≤ 5 %
Crossing Profile:	Nearly 1.00 mm
Min. Guidewire Diameter:	0.014"
Min. Guiding Catheter I.D.:	5 Fr Compatible
Radial Strength:	Excellent
Flexibility:	Excellent



Manufacturer:
Kamal Encon Industries Limited

Plot No. 917, Sector-68,
IMT Faridabad-121001, Haryana, INDIA
T: +91-129-2984917, +91-129-4198707
+91-7065950917

E: info@kamalmedtech.com

EN ISO 13485:2016 Certified Company

® Registered Trademark of
Kamal Encon Industries Limited



ORDERING INFORMATION



Dia(mm)	8	13	16	20	24	28	32	36	40	43	47
2.00	TF20008	TF20013	TF20016	TF20020	TF20024	TF20028	TF20032	TF20036	TF20040	TF20043	TF20047
2.25	TF22508	TF22513	TF22516	TF22520	TF22524	TF22528	TF22532	TF22536	TF22540	TF22543	TF22547
2.50	TF25008	TF25013	TF25016	TF25020	TF25024	TF25028	TF25032	TF25036	TF25040	TF25043	TF25047
2.75	TF27508	TF27513	TF27516	TF27520	TF27524	TF27528	TF27532	TF27536	TF27540	TF27543	TF27547
3.00	TF30008	TF30013	TF30016	TF30020	TF30024	TF30028	TF30032	TF30036	TF30040	TF30043	TF30047
3.50	TF35008	TF35013	TF35016	TF35020	TF35024	TF35028	TF35032	TF35036	TF35040	TF35043	TF35047
4.00	TF40008	TF40013	TF40016	TF40020	TF40024	TF40028	TF40032	TF40036	TF40040	TF40043	TF40047
4.50	TF45008	TF45013	TF45016	TF45020	TF45024	TF45028	TF45032	TF45036	TF45040	TF45043	TF45047

TF-BRCR-03-25112021